

GATE LEAF WEIGHT

max. 2000 kg

TRACK

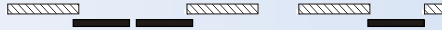
ZINC-COATED STEEL

DOOR THICKNESS

min. 45 mm

High quality components for heavy industrial sliding gates.

- ◆ For indoor and outdoor applications in hangars, warehouses, halls, etc



Steel tracks		
Cat. No.	Description	Description
214-856	3530/30 Steel track	4000 mm
214-855	3530/30 Steel track	5000 mm
214-854	3530/30 Steel track	6000 mm
Track arch		
214-913	8570C Curve 8570, radius 1000 mm	
System elements		
215-334	0285 Hanger with steel rollers	600 kg
215-353	2285 Hanger with plastic wheels	
215-393	0281 Hanger with steel rollers	
215-335	2252 Hanger with steel wheels	800 kg
215-357	2252 Hanger with steel wheels	
215-324	0281S Hanger with steel wheels	1200 kg
215-398	0285S Hanger with steel wheels	
215-350	2252 Hanger with steel wheels	2000 kg
215-336	2288S Hanger with steel wheels	
219-534	0086 Mounting bracket, M16, straight	
219-551	0086S Mounting bracket, M20, straight	
219-571	0081 Adjustable apron set	
219-531	2098 Stopper	
219-563	2095 Stopper	

Supporting screws in hangers and brackets - M16 (600 and 800 kg), M20 (1200 and 2000 kg, version S)

Cat. No. 219-531



Stopper 2098

Cat. No. 219-563



Stopper 2095

Cat. No. 219-571



Hanger 0081

Cat. No. 215-350



Hanger 288S

Cat. No. 215-336



Hanger 2288S



Zinc-coated guide 8570



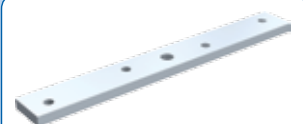
Hanger 0285



Hanger 2285



Hanger 0281



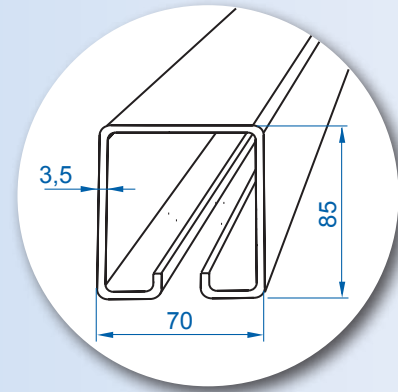
Handle 0086



Ball bearing wheels!



Bracket spacing: max 50 mm.



System elements, cont'd.

Cat. No.	Description
219-536	8571L Mounting bracket, bolt M20x125
219-568	8571 Mounting bracket, bolt M20x60
219-569	8578M Jointing bracket
219-572	8577 Bracket, suspended on T-profile
219-762	8574 Bracket
219-537	8573 Bracket
219-573	8573S Bracket
219-770	8575 Bracket, double, for embedding in the wall, lateral
219-771	8572 Bracket, for embedding in the wall, lateral
219-729	8576 Bracket, double, lateral
219-769	8576S Bracket, double, lateral
219-768	0085 Mounting bracket, $\varnothing 16$, for welding
219-570	0085S Mounting bracket, $\varnothing 20$, for welding
219-550	8580 End cap

Cat. No. 219-536



Bracket 8571L

Cat. No. 219-568



Bracket 8571

Cat. No. 219-569



Bracket 8578M

Cat. No. 219-550

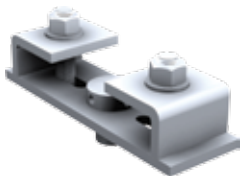


End cap 8580



Bracket 0085

Cat. No. 219-572

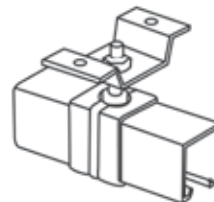


Bracket 8577

Cat. No. 219-762

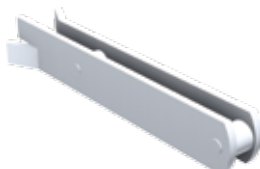


Bracket 8574



Bracket 8573

Cat. No. 219-770

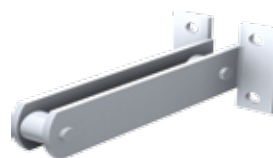


Bracket 8575

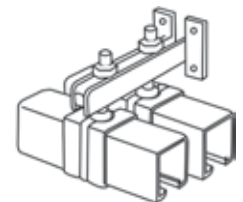
Cat. No. 219-771



Bracket 8572



Bracket 8576



Methods of track installation and lower guide mounting versions are shown on pages 58-59.