

**DOOR LEAF WEIGHT**

**max. 150 kg**

**TRACK**

**ZINC-COATED STEEL**

**DOOR THICKNESS**

**min. 25 mm**

**Excellent system for sliding industrial doors.**

- ◆ **For indoor and outdoor applications, in warehouses, manufacturing halls, etc**



Set for sliding door or gate, up to 150 kg

Cat. No.	Description	Qty
<b>219-517</b>	5040GV Set of SPORTUB connecting elements for doors up to 150 kg	
Set includes		
<b>215-320</b>	0255A Hanger with steel wheels	2 pcs
<b>219-499</b>	0056 Mounting bracket, straight	2 pcs
<b>219-491</b>	5041 Mounting bracket	8 pcs
<b>219-402</b>	3531M jointing bracket	1 pc
<b>219-495</b>	5043 Bracket	9 pcs
<b>219-498</b>	5050 End cap	2 pcs
<b>219-501</b>	1099 Bottom guide	2 pcs
<b>219-502</b>	2091 Stopper	2 pcs
<b>337-755</b>	1298 Handle	1 pc

Steel trucks

Cat. No.	Description	Length
<b>214-870</b>	5040/200 Steel track	2000 mm
<b>214-860</b>	5040/300 Steel track	3000 mm
<b>214-800</b>	5040/400 Steel track	4000 mm
<b>214-801</b>	5040/500 Steel track	5000 mm
<b>214-802</b>	5040/600 Steel track	6000 mm

Track arch

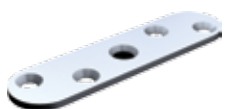
<b>214-900</b>	5040C Curve for track 5040, radius 600 mm
----------------	---

System elements

<b>215-320</b>	0255A Hanger with steel wheels
<b>215-333</b>	0255D Hanger with plastic wheels
<b>215-305</b>	2252 Hanger with steel wheels
<b>215-301</b>	2255 Hanger with steel wheels
<b>215-306</b>	0251A Hanger with steel wheels
<b>215-367</b>	0251D Hanger with plastic wheels
<b>219-499</b>	0056 Mounting bracket, straight
<b>219-408</b>	0055 Mounting bracket, $\varnothing 12$ , for welding
<b>219-500</b>	0051 Adjustable apron set
<b>219-502</b>	2091 Stopper
<b>219-403</b>	1098 Stopper

Supporting screws in hangers and brackets - M12

Cat. No. 219-499



Bracket 0056

Cat. No. 219-408



Bracket 0055



Zinc-coated guide 5040

Cat. No. 215-305



Hanger 0255



Hanger 2252

Cat. No. 215-301



Hanger 2255

Cat. No. 219-500



Bracket 0051

Cat. No. 219-403



Stopper 1098

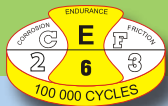
Cat. No. 219-502



Stopper 2091



Hanger 0251



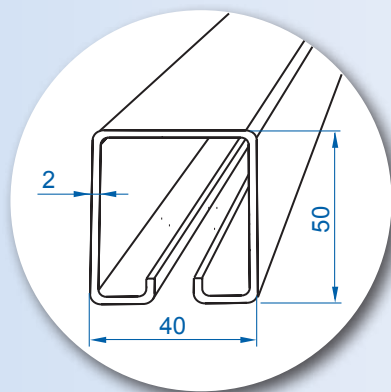
# Ball bearing wheels!



Bracket spacing: max 70 mm.

Bracket spacing: max 70 mm.

Cat. No.	Description
219-492	5041L Mounting bracket, bolt M12x104
219-491	5041 Mounting bracket, bolt M12x49
219-415	5141 Mounting bracket, wall-mounted
219-402	3531M Jointing bracket
219-404	5144 Mounting bracket, ceiling-mounted
219-493	5041M Jointing bracket
219-552	5047 Bracket, suspended on T-profile
219-522	5044 Bracket, upper
219-495	5043 Bracket
219-731	5045 Bracket, double, for embedding in the wall, lateral
219-497	5046 Bracket, double, lateral
219-494	5042 Bracket, for embedding in the wall, lateral
219-501	1099 Bottom guide
337-750	1290 Dished flush pull, 200x90 mm
337-753	1290X Dished flush pull, 200x90 mm, stainless steel
337-755	1298 Handle, 245 mm
219-498	5050 End cap



Cat. No. 219-492



Bracket 5041L

Cat. No. 219-491



Bracket 5041

Cat. No. 219-415



Bracket 5141

Cat. No. 219-402



Bracket 5041MC

Cat. No. 219-404



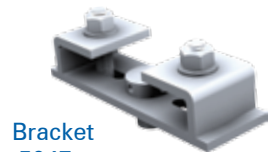
Bracket 5144

Cat. No. 219-493



Bracket 5041M

Cat. No. 219-552



Bracket 5047

Cat. No. 219-522



Bracket 5044

Cat. No. 219-495



Bracket 5043



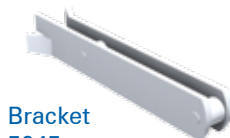
Handle 1290

Cat. No. 337-755



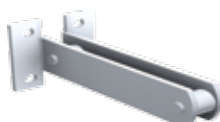
Handle 1298

Cat. No. 219-731



Bracket 5045

Cat. No. 219-497



Bracket 5046

Cat. No. 219-494



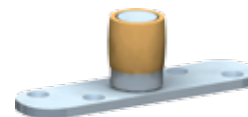
Bracket 5042

Cat. No. 219-498



End cap 5050

Cat. No. 219-501



Bottom guide 1099

Methods of installation and options concerning lower guide mounting are shown on pages 58-59.